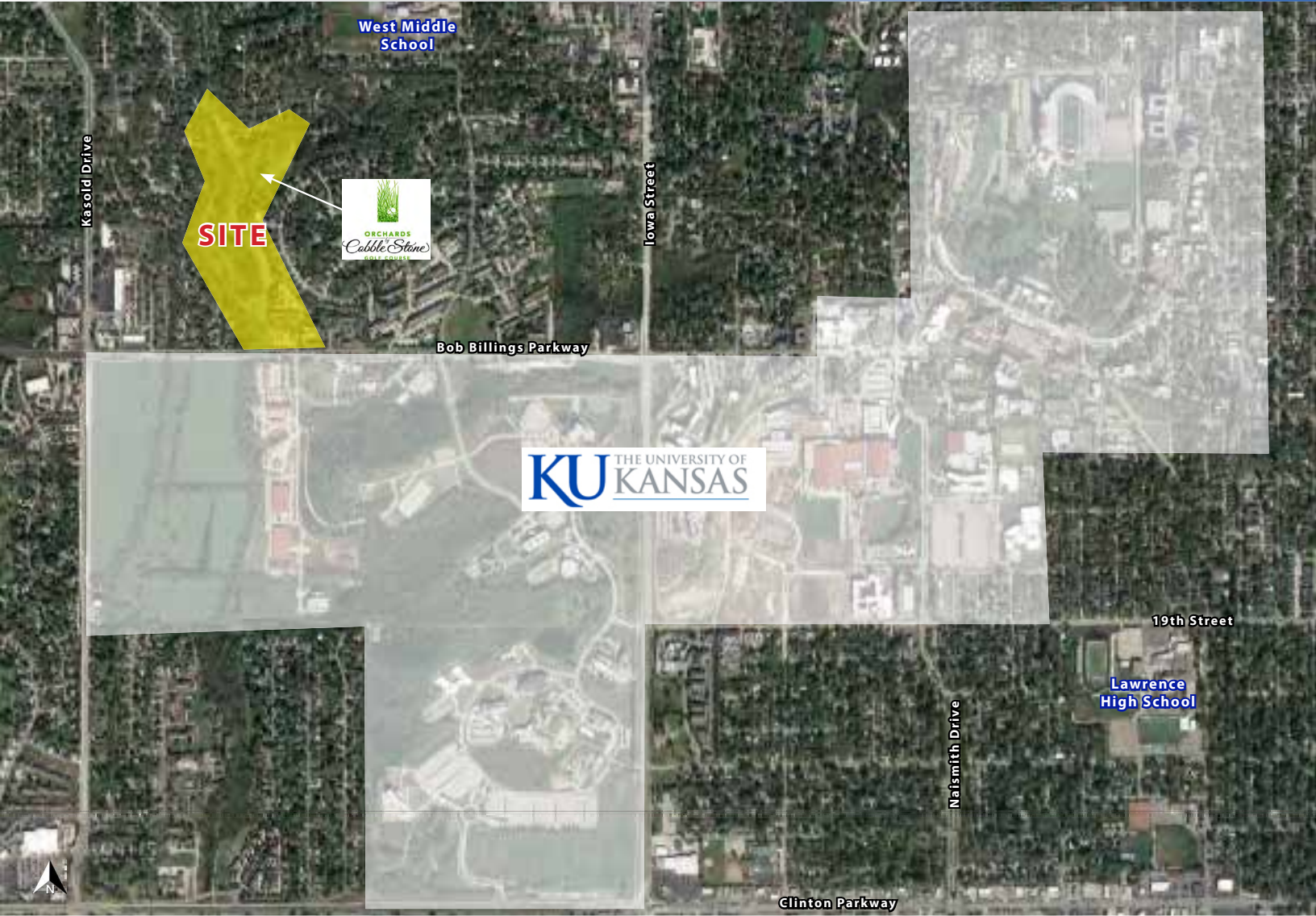




Rare Lawrence, KS Infill Redevelopment Opportunity

3000 W. Bob Billings Parkway, Lawrence, Kansas




FOR SALE | CALL FOR PRICING



ORCHARDS
CobbleStone
GOLF COURSE

- 30.5 acres course located between Kasold Drive and Iowa Street, consists of 9-holes of golf, a putting green, a club house, along with 9-holes of Footgolf
- This course is ideally located blocks from the University of Kansas and rests at the bottom of a valley and is tightly nestled in between multifamily residence to the East and estates to the West. With large trees lining every hole, this track creates a fun and challenging environment that will test the skill levels of even the most experienced golfer.

 [CLICK HERE TO VIEW MORE LISTING INFORMATION](#)

For More Information Contact: *Exclusive Agents*
DAVID BLOCK | 816.412.7400 | dblock@blockandco.com
PHIL PECK | 816.412.7364 | ppeck@blockandco.com





Rare Lawrence, KS Infill Redevelopment Opportunity

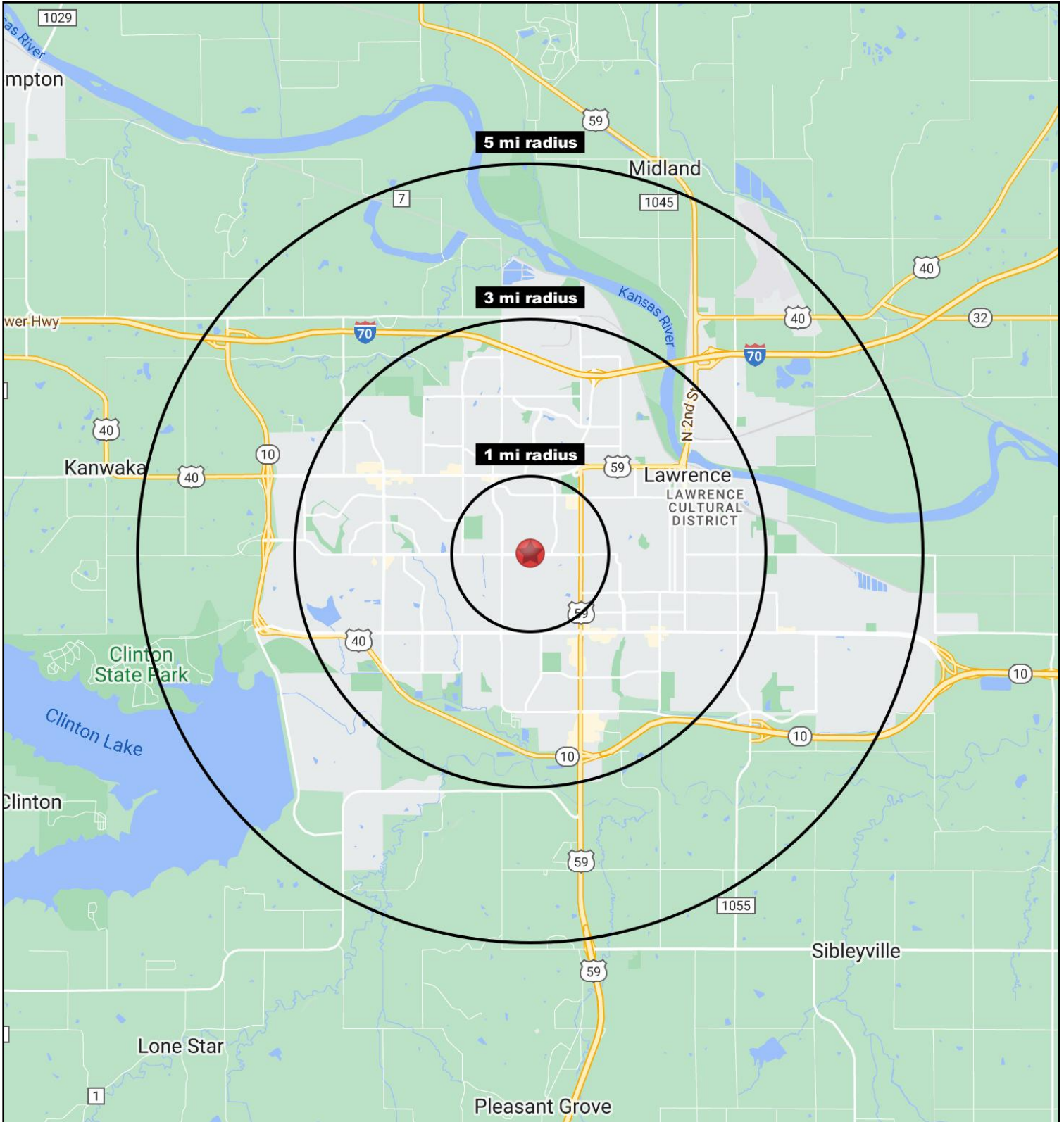
3000 W. Bob Billings Parkway, Lawrence, Kansas

PHOTOS



Rare Lawrence, KS Infill Redevelopment Opportunity

3000 W. Bob Billings Parkway, Lawrence, Kansas





Rare Lawrence, KS Infill Redevelopment Opportunity

3000 W. Bob Billings Parkway, Lawrence, Kansas

3000 Bob Billings Pkwy Lawrence, KS 66049	1 mi radius	3 mi radius	5 mi radius
Population			
2022 Estimated Population	11,731	84,079	97,712
2027 Projected Population	12,119	87,626	102,198
2020 Census Population	11,783	84,877	97,060
2010 Census Population	11,786	79,216	89,992
Projected Annual Growth 2022 to 2027	0.7%	0.8%	0.9%
Historical Annual Growth 2010 to 2022	-	0.5%	0.7%
2022 Median Age	28.2	30.4	30.9
Households			
2022 Estimated Households	4,451	35,317	40,827
2027 Projected Households	4,582	36,280	42,082
2020 Census Households	4,422	35,662	40,519
2010 Census Households	4,136	31,812	35,916
Projected Annual Growth 2022 to 2027	0.6%	0.5%	0.6%
Historical Annual Growth 2010 to 2022	0.6%	0.9%	1.1%
Race and Ethnicity			
2022 Estimated White	57.0%	69.9%	70.6%
2022 Estimated Black or African American	3.7%	4.7%	4.9%
2022 Estimated Asian or Pacific Islander	28.8%	12.6%	11.3%
2022 Estimated American Indian or Native Alaskan	1.5%	1.8%	1.8%
2022 Estimated Other Races	9.0%	11.1%	11.3%
2022 Estimated Hispanic	6.2%	7.5%	7.6%
Income			
2022 Estimated Average Household Income	\$75,777	\$82,195	\$81,793
2022 Estimated Median Household Income	\$51,898	\$64,154	\$65,324
2022 Estimated Per Capita Income	\$29,877	\$34,991	\$34,613
Education (Age 25+)			
2022 Estimated Elementary (Grade Level 0 to 8)	2.1%	1.1%	1.2%
2022 Estimated Some High School (Grade Level 9 to 11)	5.0%	3.2%	3.1%
2022 Estimated High School Graduate	13.5%	16.8%	17.3%
2022 Estimated Some College	15.3%	18.0%	18.0%
2022 Estimated Associates Degree Only	5.0%	6.8%	6.8%
2022 Estimated Bachelors Degree Only	32.8%	28.9%	28.8%
2022 Estimated Graduate Degree	26.3%	25.2%	24.7%
Business			
2022 Estimated Total Businesses	262	3,109	3,419
2022 Estimated Total Employees	2,407	36,842	41,369
2022 Estimated Employee Population per Business	9.2	11.8	12.1
2022 Estimated Residential Population per Business	44.8	27.0	28.6

©2022. Sites USA. Chandler, Arizona. 480-491-1112 Demographic Source: Applied Geographic Solutions 6/2022. TIGER Geographv - RS1

